

vtech[®]

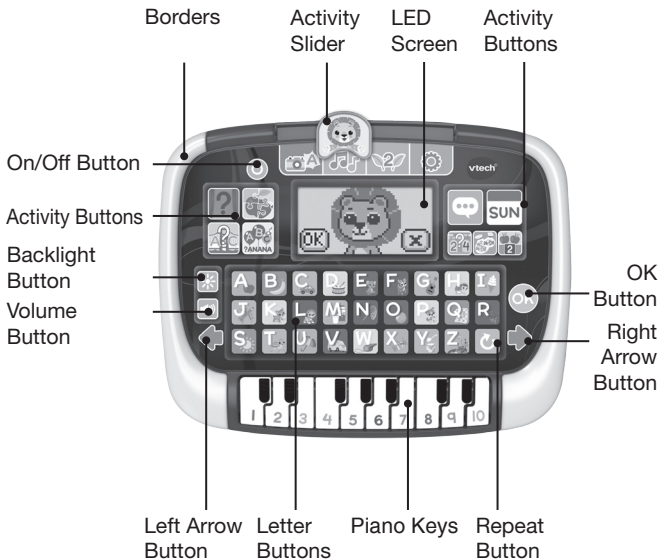
Instruction Manual

Little Apps Light-Up Tablet™



INTRODUCTION

Thank you for purchasing the **Little Apps Light-Up Tablet™**. Play 12 exciting activities that help to reinforce learning of letters, words, math and music skills. Magical color-changing borders brighten your playtime and learning with the lion!



INCLUDED IN THE PACKAGE

- Little Apps Light-Up Tablet™
- Quick Start Guide

WARNING

All packing materials such as tape, plastic sheets, packaging locks, removable tags, cable ties, cords and packaging screws are not part of this toy, and should be discarded for your child's safety.

NOTE

Please save this Instruction Manual as it contains important information.

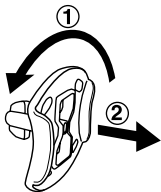
ATTENTION

Pour la sécurité de votre enfant, débarrassez-vous de tous les produits d'emballage tels que rubans adhésifs, feuilles de plastique, attaches, étiquettes, cordons et vis d'emballage. Ils ne font pas partie du jouet.

NOTE

Il est conseillé de sauvegarder ce manuel d'utilisation car il comporte des informations importantes.

Unlock the Packaging Locks

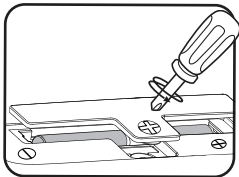


- ① Rotate the packaging locks 90 degrees counterclockwise.
- ② Pull out the packaging locks and discard.

GETTING STARTED

Battery Removal and Installation

1. Make sure the unit is turned **Off**.
2. Find the battery cover located on the back of the unit, use a screwdriver to loosen the screw, and then open the battery cover.
3. Remove old batteries by pulling up on one end of each battery.
4. Install 2 new AA (AM-3/LR6) batteries following the diagram inside the battery box. (For best performance, alkaline batteries or fully charged Ni-MH rechargeable batteries are recommended.)
5. Replace the battery cover and tighten the screw to secure.



WARNING:

Adult assembly required for battery installation.
Keep batteries out of reach of children.

ATTENTION:

Les piles ou accumulateurs doivent être installés par un adulte.
Tenir les piles ou accumulateurs hors de portée des enfants.

IMPORTANT: BATTERY INFORMATION

- Insert batteries with the correct polarity (+ and -).
- Do not mix old and new batteries.
- Do not mix alkaline, standard (carbon-zinc) or rechargeable batteries.
- Only batteries of the same or equivalent type as recommended are to be used.

- Do not short-circuit the supply terminals.
- Remove batteries during long periods of non-use.
- Remove exhausted batteries from the toy.
- Dispose of batteries safely. Do not dispose of batteries in fire.

RECHARGEABLE BATTERIES

- Remove rechargeable batteries (if removable) from the toy before charging.
- Rechargeable batteries are only to be charged under adult supervision.
- Do not charge non-rechargeable batteries.

IMPORTANT : INFORMATIONS CONCERNANT LES PILES

Les piles fournies avec le produit permettent de tester le jouet en magasin mais ne sont pas des piles longue durée.

- Mettre en place les piles ou les accumulateurs en respectant les polarités + et -.
- Ne pas mélanger des piles ou des accumulateurs neufs avec des usagés.
- Ne pas mélanger différents types de piles : alcalines, zinccarbone et rechargeables.
- Seules des piles du type recommandé doivent être utilisées.
- Ne pas mettre les bornes d'une pile ou d'un accumulateur en court-circuit (en reliant directement le + et le -).
- Retirer les piles ou les accumulateurs en cas de non-utilisation prolongée.
- Enlever les piles ou les accumulateurs usagés du jouet.
- Ne les jeter ni au feu ni dans la nature.

PILES RECHARGEABLES

- Enlever, lorsque c'est possible, les accumulateurs du jouet pour les recharger.
- Les accumulateurs ne doivent être chargés que sous la surveillance d'un adulte.
- Ne pas tenter de recharger des piles non rechargeables.

PRODUCT FEATURES

1. On/Off Button

To turn the unit on, press the **On/Off Button**. Press the **On/Off Button** again to turn the unit **Off**.

2. Color Borders

Four vibrant border colors including red, blue, pink and purple glow as you play.



3. LED Screen

Watch the screen turn red, purple, blue or pink.



4. Activity Slider



Slide the **Activity Slider** to choose among three activities and settings.

5. Activity Buttons

Press one of the **Activity Buttons** to choose any of the nine activities.



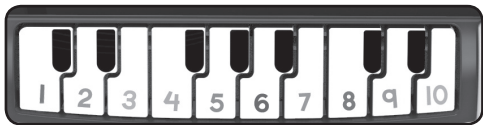
6. Letter Buttons

Press the **Letter Buttons** to learn about about letters, to answer letter-related questions.



7. Piano Keys

Press the **Piano Keys** to learn about numbers, to answer number-related questions or to play piano.



8. Arrow Buttons



Press the **Arrow Buttons** to navigate on the screen or to select an option.

9. OK Button



Press the **OK Button** to confirm a selection.

10. Backlight Button



Press the **Backlight Button** to change the backlight color of the screen to red, blue, pink or purple or to turn the backlight off.

11. Volume Button



Press the **Volume Button** to adjust the volume. Press the **Left Arrow Button** to reduce the volume level, or press the **Right Arrow Button** to increase the volume level, and then press the **OK Button** to confirm.

12. Repeat Button



Press the **Repeat Button** to repeat the game instruction or question.

13. Automatic Shut-Off

To preserve battery life, the **Little Apps Light-Up Tablet™** will automatically shut off after several minutes without input. The unit can be turned on again by pressing the **On/Off Button**. The unit will also automatically turn off when the batteries are very low. A warning will be displayed on the screen as a reminder to change the batteries.

NOTE

If the unit powers down or if the lights fade during play, please install a new set of batteries.

TO BEGIN PLAY

- Press the **On/Off Button** to turn the unit **On**. A short animation will play and you will be asked to select an activity.
- Slide the **Activity Slider** to choose one of the four activities or press one of the **Activity Buttons** to play.

ACTIVITIES

1. My Camera



Press any of **Letter Buttons** to learn about the alphabet and words, or press the **Piano Keys** to discover numbers 1-10.



2. My Piano



Press the **Piano Keys** to play piano notes, or press the **Letter Buttons** to hear fun sounds.



3. Planting Fun

Press any of the **Piano Keys** to see that number of plants grow and be counted.



4. Settings

In **Settings**, you can turn the border light on or off, adjust the screen contrast, and turn the background music on or off.

Press the **Arrow Buttons** to set and press the **OK Button** to confirm.



5. Hidden Letters

Which letter is hidden by the lion? Use the **Arrow Buttons** to move the lion aside and press the correct **Letter Button** to answer.



6. Picture Puzzle

Press the **Arrow Buttons** to flip four pieces of the picture, then press the **OK Button** once the picture is formed correctly.



7. Letter Bridge

Find the missing letter to complete the bridge for the lion to cross. There are three levels. The difficulty level will increase as you progress.



8. Word Party



Find the missing letter to spell the words.
There are three levels. The difficulty level will increase as you progress.



9. Talking Pal



The lion will ask you some questions. Press the **Arrow Buttons** to select the answer, then press the **OK Button** to confirm.



10. My Calendar



SUN

Use the **Arrow Buttons** and the **OK Button** to choose a day of the week and see the lion's fun daily activities.



11. Number Bridge



Find the missing number to complete the bridge for the lion to cross. There are three levels. The difficulty level will increase as you progress.



12. More or Less



Press the **Arrow Buttons** and the **OK Button** to choose which side of the screen has more or less options. There are three levels. The difficulty level will increase as you progress.



13. Counting Fun



Count how many objects are on the screen and press the **Piano Keys** to answer. There are three levels. The difficulty level will increase as you progress.



CARE & MAINTENANCE

1. Keep the unit clean by wiping it with a slightly damp cloth.
2. Keep the unit out of direct sunlight and away from any direct heat sources.
3. Remove the batteries if the unit is not in use for an extended period of time.
4. Do not drop the unit on a hard surface and do not expose the unit to moisture or water.

TROUBLESHOOTING

If for some reason the unit stops working, please follow these steps:

1. Turn the unit **Off**.
2. Interrupt the power supply by removing the batteries.
3. Let the unit stand for a few minutes, then replace the batteries.
4. Turn the unit **On**. The unit should now be ready to use again.
5. If the unit still does not work, install a new set of batteries.

IMPORTANT NOTE

If the problem persists, please call our **Consumer Services Department** at **1-800-521-2010** in the U.S. or **1-877-352-8697** in Canada, or visit our website at **vtechkids.com** and fill out our **Contact Us** form located under the **Customer Support** link. Creating and developing **VTech®** products is accompanied by a responsibility that we take very seriously. We make every effort to ensure the accuracy of the information, which forms the value of our products. However, errors sometimes can occur. It is important for you to know that we stand behind our products and encourage you to contact us with any problems and/or suggestions that you might have. A service representative will be happy to help you.

CAUTION

Changes or modifications not expressly approved by the party responsible for compliance could void the user's authority to operate the equipment.

NOTE

This equipment has been tested and found to comply with the limits for a Class B digital device, pursuant to Part 15 of the FCC Rules. These limits are designed to provide reasonable protection against harmful interference in a residential installation. This equipment generates, uses and can radiate radio frequency energy and, if not installed and used in accordance with the instructions, may cause harmful interference to radio communications. However, there is no guarantee that interference will not occur in a particular installation. If this equipment does cause harmful interference to radio or television reception, which can be determined by turning the equipment off and on, the user is encouraged to try to correct the interference by one or more of the following measures:

- Reorient or relocate the receiving antenna.
- Increase the separation between the equipment and receiver.
- Connect the equipment into an outlet on a circuit different from that to which the receiver is connected.
- Consult the dealer or an experienced radio/TV technician for help.

Supplier's Declaration of Conformity
47 CFR § 2.1077 Compliance Information

Trade Name: VTech®
Model: 5517
Product Name: Little Apps Light-Up Tablet™
Responsible Party: VTech Electronics North America, L.L.C.
Address: 1156 W. Shure Drive, Suite 200
Arlington Heights, IL 60004
Website: vtechkids.com

THIS DEVICE COMPLIES WITH PART 15 OF THE FCC RULES. OPERATION IS SUBJECT TO THE FOLLOWING TWO CONDITIONS: (1) THIS DEVICE MAY NOT CAUSE HARMFUL INTERFERENCE, AND (2) THIS DEVICE MUST ACCEPT ANY INTERFERENCE RECEIVED, INCLUDING INTERFERENCE THAT MAY CAUSE UNDESIRE OPERATION.

CAN ICES-003(B)/NMB-003(B)

**Visit our website for more
information about our products,
downloads, resources and more.**

vtechkids.com
vtechkids.ca

Read our complete warranty policy online at
vtechkids.com/warranty
vtechkids.ca/warranty

